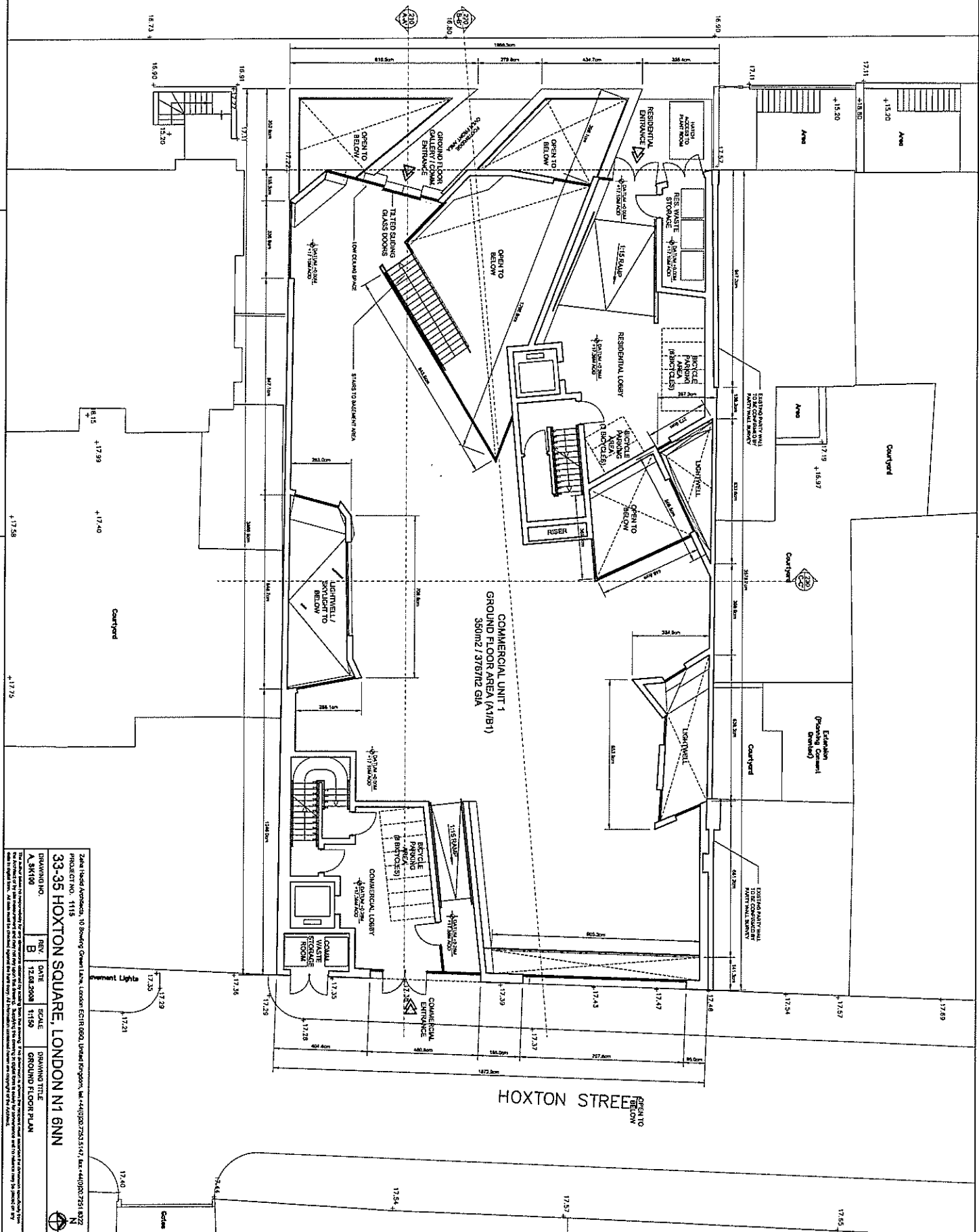


HOXTON SQUARE



COMMERCIAL UNIT 1
GROUND FLOOR AREA (A1/B1)
350m² / 3787m² GFA

33-35 HOXTON SQUARE, LONDON N1 6NN
 PROJECT NO: 1115
 DRAWING NO: A_SK100
 REV: B
 DATE: 12.08.2008
 SCALE: 1:150
 DRAWING TITLE: GROUND FLOOR PLAN
 DRAWING DATE: 12.08.2008
 SCALE: 1:150
 DRAWING TITLE: GROUND FLOOR PLAN

Total Land Area: 10,000 sqm
 Planning Permission: 10/0100/2008/0001
 Planning Conditions: 1, 2, 3, 4, 5, 6, 7, 8, 9, 10, 11, 12, 13, 14, 15, 16, 17, 18, 19, 20, 21, 22, 23, 24, 25, 26, 27, 28, 29, 30, 31, 32, 33, 34, 35, 36, 37, 38, 39, 40, 41, 42, 43, 44, 45, 46, 47, 48, 49, 50, 51, 52, 53, 54, 55, 56, 57, 58, 59, 60, 61, 62, 63, 64, 65, 66, 67, 68, 69, 70, 71, 72, 73, 74, 75, 76, 77, 78, 79, 80, 81, 82, 83, 84, 85, 86, 87, 88, 89, 90, 91, 92, 93, 94, 95, 96, 97, 98, 99, 100